

Modulator®

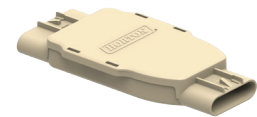
A high-torque, compact fan drive engineered for precision control of larger cooling fans.

- **Maximum uptime**
 - Maintenance-free
 - No friction liners or wear parts to replace
- **Damage-resistant fan drive design**
 - Unexposed control harness means no drive replacement if belt breaks
- **Less noise and low off-speed**
 - Fan only engages at the amount needed for proper cooling
- **Maximum fuel efficiency and available engine horsepower**
 - Fully-variable operation



Modulator® RCV250 Fully Variable Fan Drive Specifications	
Maximum torque	Up to 250 N-m [2,113 in.-lbs.] (on/off), 225 N-m [1,991 in.-lbs.] (fully variable)
Typical fan blade capacity	Configurations of 6 – 13 blades; 660 – 1,092 mm [26 – 43 in.] diameters
Typical engine horsepower range	350 – 500 kW [469 – 671 hp]

(Optional)



Di+™ Controller

The Horton Modulator® RCV250 is engineered for use with Horton WindMaster® or competitive fans and can be combined with an optional J-1939-compatible Di+ Controller for customized precision-cooling control.

ENGINEERED FOR:

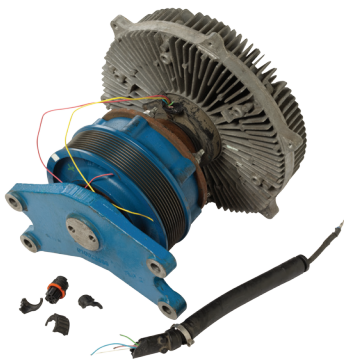


Additional Product Benefits

- Innovative design provides faster response time and lower off-speed for maximum efficiency
- Uses Horton's industry-leading, double row, angular contact (DRAC) bearing for increased durability and product life
- Hub bearing supports only belt loads, which decreases bearing load and increases product life
- More compact and lighter weight versus competition with Horton's one-piece design for ease of installation

Uptime Matters

Competitive drives employ a fan drive design wherein the control harness would be exposed to damage caused by fraying or broken belts. The result is usually a full component replacement. Horton's RCV250 uses a rigid center shaft with the control harness running through the center, thereby protecting it from the belt and other potential harm.



Fan drive damage caused by a frayed or broken belt



The Horton RCV250 design with integral control harness

Committed to Your Ideal Airflow Solution

Horton® is the premium provider of engine cooling solutions worldwide. Our culture of innovation delivers high-performance products that last and services that help you meet your commitments. Trust Horton to help your products last longer, run quieter and consume less fuel.

OFFICES

USA

Minnesota, USA**
South Dakota, USA*
Indiana, USA*
+1 (651) 361-6400
1 (800) 621-1320
info@hortonww.com

Canada

Quebec, Canada
+1 (514) 250-8970
info@hortonww.com

Mexico

Edo. Méx., México
+52 (55) 5360-1506
contacto@hortonww.com

Europe

Schweinfurt, Germany*
+49-(0)9721-475-0
contact@hortonww.com

REPRESENTATIVES

Russia

Moscow, Russia
+7 (926) 046-64-77
sergey.fedorenko@hortonww.com

Japan

CFE
Tokyo, Japan
+81 (3) 3583-5000
shin.suzuki@hortonww-jp.com

Brazil

Mauro Ferreira
Santo André, SP
+55 (11) 4475-5679
mauro.ferreira@hortonww.com

Korea

Junction Tech
Seoul, Korea
+82-10-85585763
jisukim@jctech.org

P.R. China

R&S Promotion Co., Ltd.
West Beijing, P.R. China
+86-10-63626188
info@rs-promotion.com.cn

Tunisia

Kamel Moalla
Sfax, Tunisia
+21623429677
kamel.moalla@hortonww.com

India

Excel Polymotive
Mumbai, India
+91 22-25783028
hitenshah@excelpolymotive.com

Australia

Norman G. Clark Pty, Ltd. (licensee)
Victoria, Australia
+61-3-9450-8200
customerservice@ngclark.com.au



www.hortonww.com